

ZION SQUARE 2

D U L E R , M A P U S A - G O A

A PROJECT BY  CLASSIC
SQUARES



*Most people build as they live -
as a matter of routine and senseless accident.
But a few understand that building
is a great symbol.*

*We live in our minds, and existence is
an attempt to bring that life into physical reality,
to state it in gesture and form.*

*For the man who understands this,
a house he owns is a statement of his life,
if he doesn't build, when he has the means,
it's because his life has not been what he wanted.*

Ayn Rand, Fountainhead



For those seeking a world of their own without compromising on the conveniences of everyday life, we introduce to you **ZION SQUARE 2**, a fully gated residential complex with excellent security measures.



Enjoy Nature in all its glory, with beautiful tree lined walkways and creatively landscaped green zones, offering you a seamless blend between the comforts of your home and its lush exteriors.



ZION SQUARE 2 offers you numerous outdoor spaces with

- A Half Basketball Court
- Badminton Court
- Volleyball Court
- Swimming Pool
- Beautiful Landscape Zone

- Wide open spaces with specially designed
- Play Areas for Little Children
 - Recreational Activity Centre
 - Party Hall for Residents
 - Club House



- Fully Equipped Gymnasium to keep you fit.





ZION SQUARE 2 Features beautiful 2 and 3 Bedroom Apartments created by balancing luxury with innovative design and architecture.

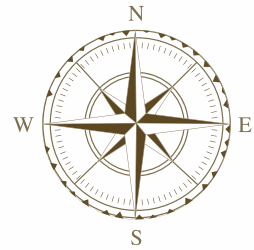
- A Comfortable Living Area greets you with a Separate cozy Dining Area, with the incorporation of a Meticulously designed Modular Kitchen.
- Unique Covered Terraces to enjoy peace and quiet or, to simply experience the outdoor beauty of **ZION SQUARE 2**.

ZION² SQUARE

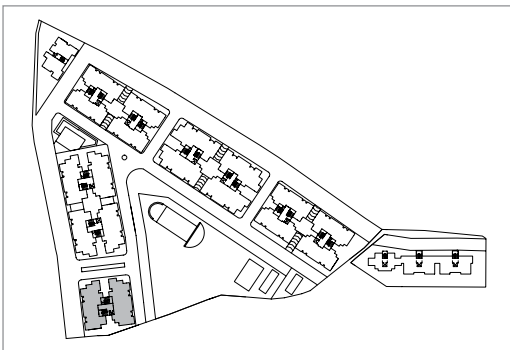


ZION² SQUARE

MASTER PLAN



TYPICAL FLOOR PLAN BLOCK A



APARTMENT NO.: 001, 101, 201, 301, 401	APARTMENT NO.: 002, 102, 202, 302, 402	APARTMENT NO.: 003, 103, 203, 303, 403	APARTMENT NO.: 004, 104, 204, 304, 404
3 BHK	2 BHK	2 BHK	3 BHK
SBU Area : 143.00 m ²	SBU Area : 120.50 m ²	SBU Area : 112.00 m ²	SBU Area : 140.50 m ²

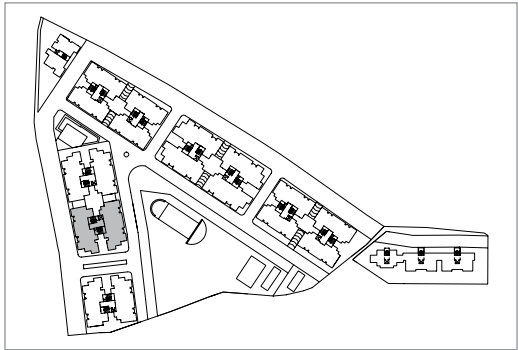
TYPICAL
FLOOR PLAN
BLOCK B1

GREENERY SIDE



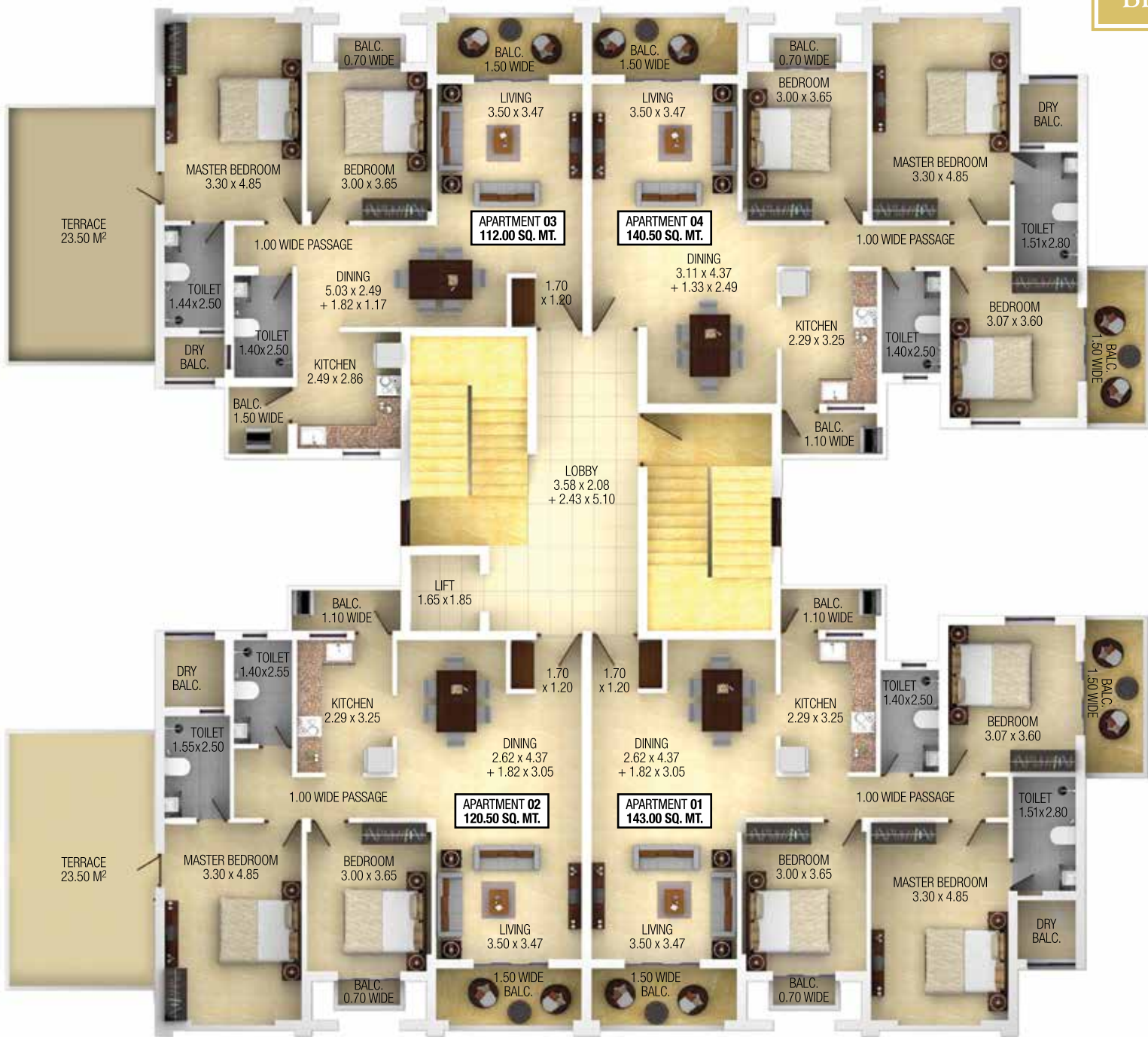
POOL SIDE

APARTMENT NO.: 001, 101, 201, 301, 401	APARTMENT NO.: 002, 102, 202, 302, 402	APARTMENT NO.: 003, 103, 203, 303, 403	APARTMENT NO.: 004, 104, 204, 304, 404
2 BHK SBU Area : 120.50 m ²	3 BHK SBU Area : 143.00 m ²	3 BHK SBU Area : 140.50 m ²	2 BHK SBU Area : 112.00 m ²



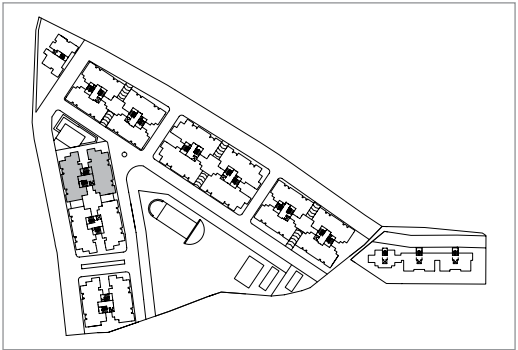
GREENERY SIDE

TYPICAL
FLOOR PLAN
BLOCK B2



POOL SIDE

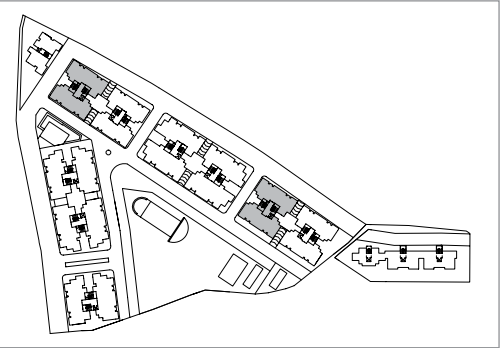
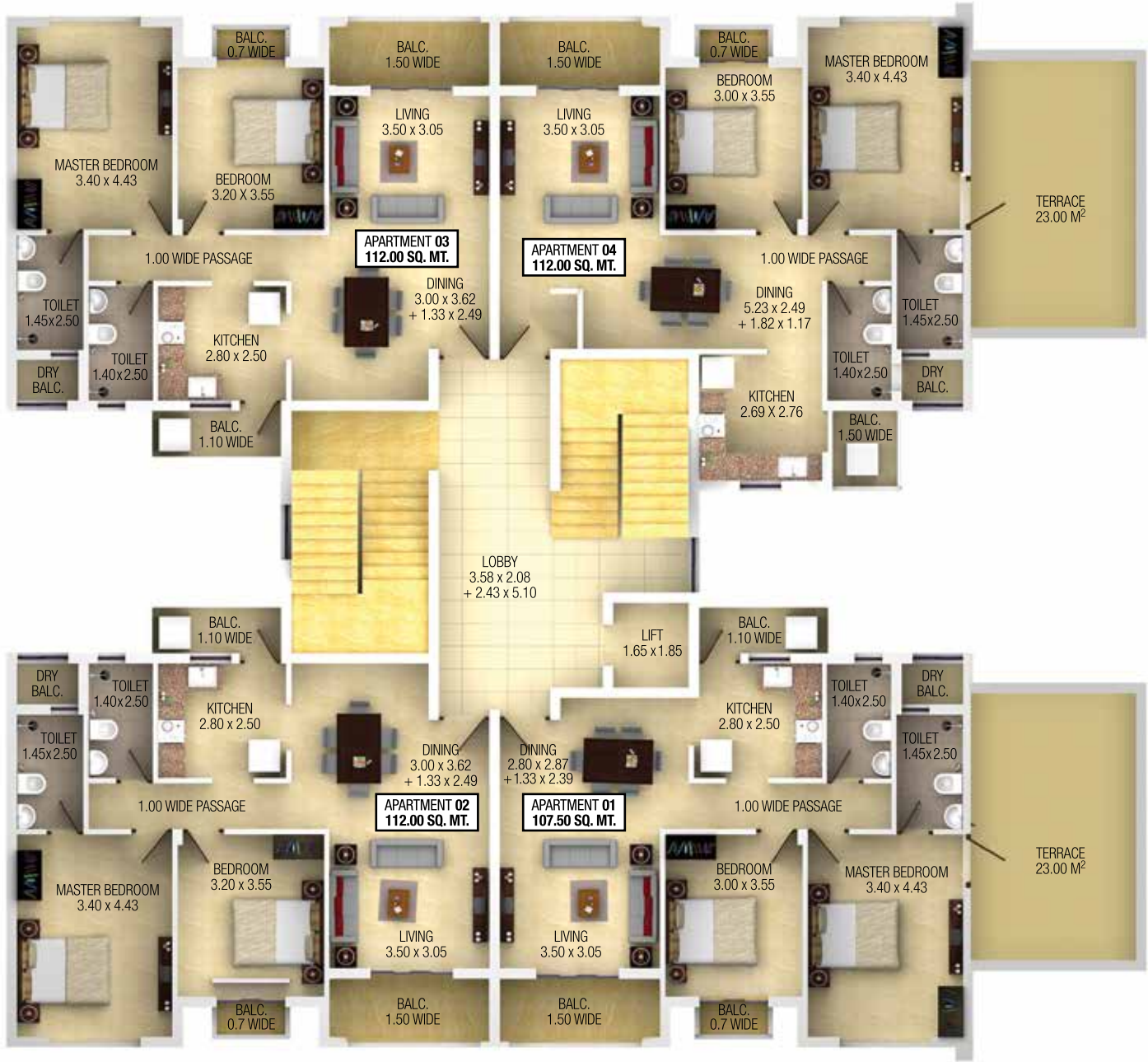
APARTMENT NO.: 001, 101, 201, 301, 401	APARTMENT NO.: 002, 102, 202, 302, 402	APARTMENT NO.: 003, 103, 203, 303, 403	APARTMENT NO.: 004, 104, 204, 304, 404
3 BHK SBU Area : 143.00 m ²	2 BHK SBU Area : 120.50 m ²	2 BHK SBU Area : 112.00 m ²	3 BHK SBU Area : 140.50 m ²



APARTMENT NO. : 002, 003, 202, 203, 402 & 403 - Terrace: 23.50 m²

TYPICAL
FLOOR PLAN
BLOCK C1
BLOCK E1

GREENERY SIDE

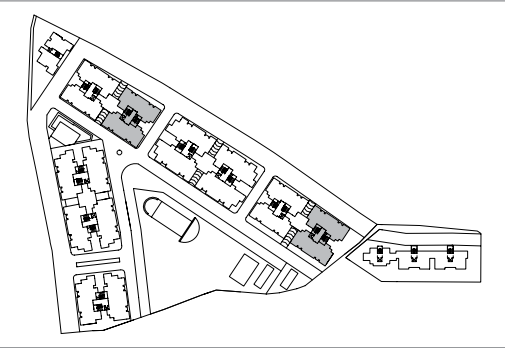
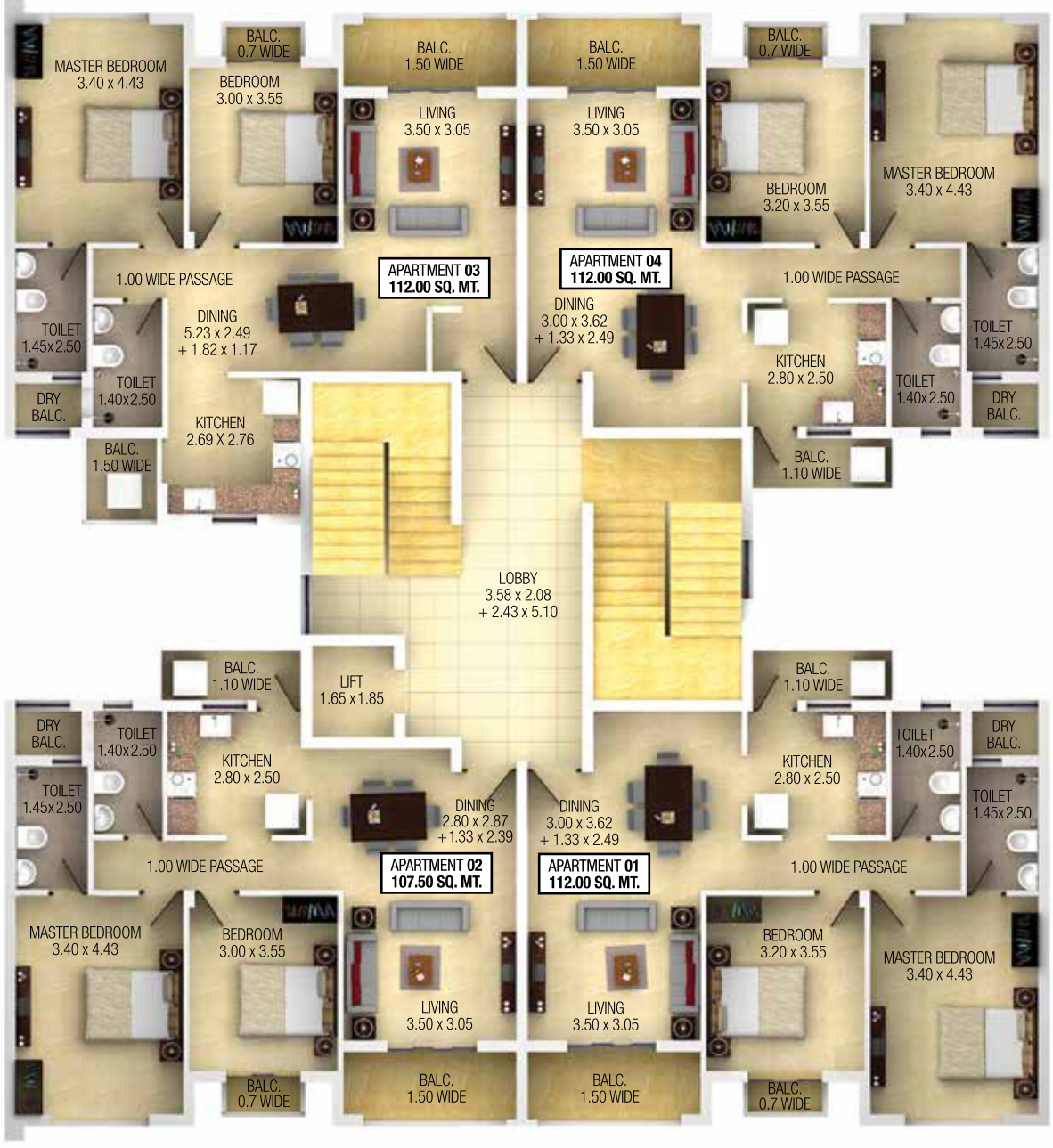


POOL SIDE

APARTMENT NO.: 001, 101, 201, 301, 401	APARTMENT NO.: 002, 102, 202, 302, 402	APARTMENT NO.: 003, 103, 203, 303, 403	APARTMENT NO.: 004, 104, 204, 304, 404
2 BHK	2 BHK	2 BHK	2 BHK
SBU Area : 107.50 m ²	SBU Area : 112.00 m ²	SBU Area : 112.00 m ²	SBU Area : 112.00 m ²

APARTMENT NO. : 001, 004, 201, 401, 204 & 404 - Terrace: 23.00 m²

GREENERY SIDE

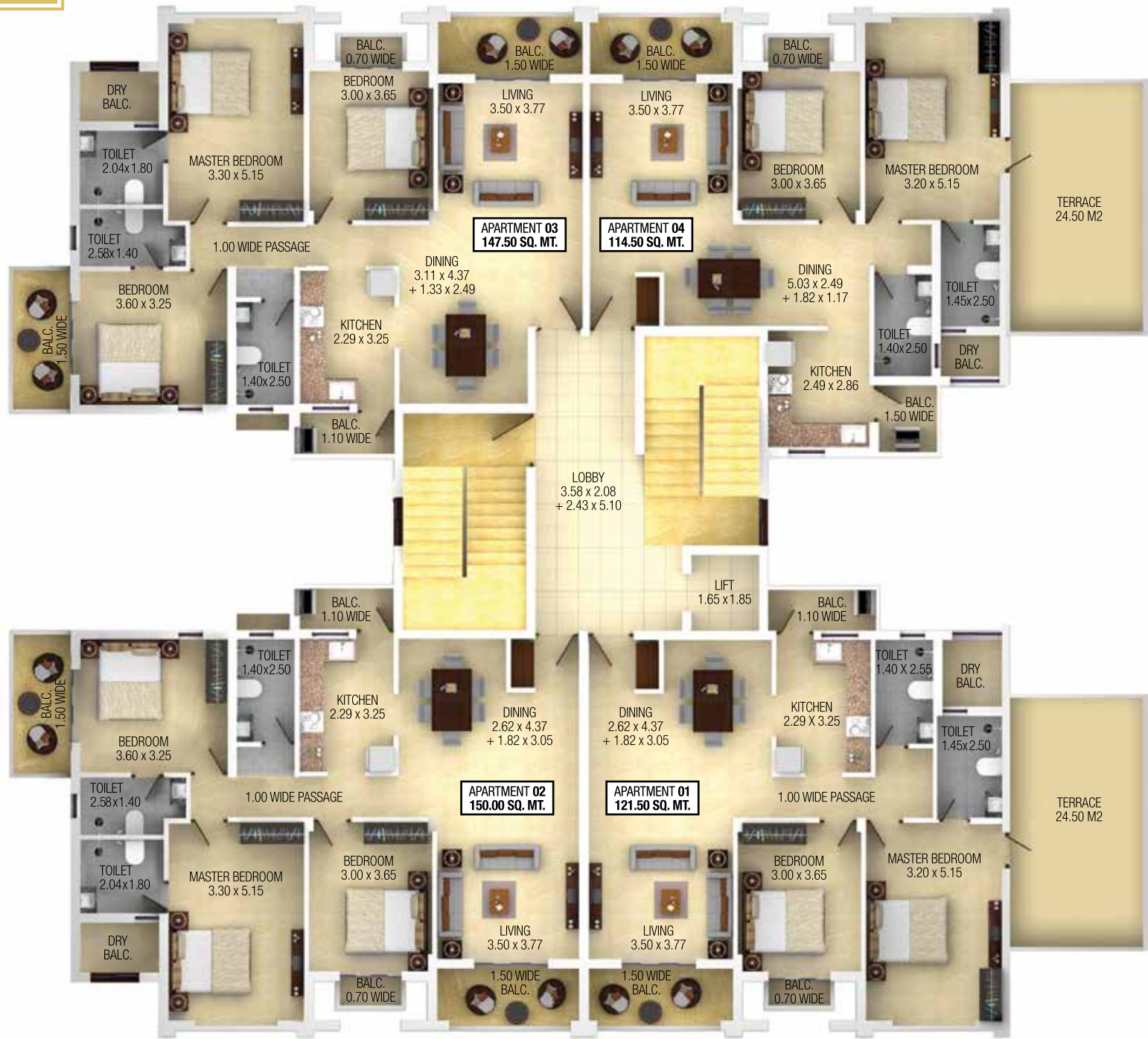


POOL SIDE

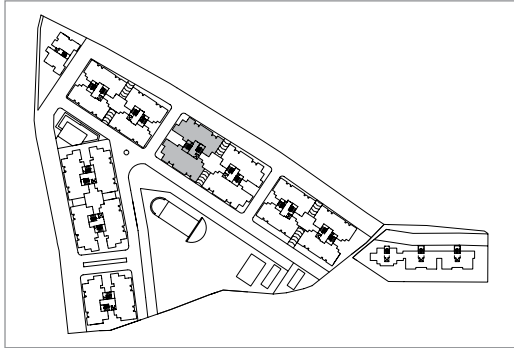
APARTMENT NO.: 001, 101, 201, 301, 401	APARTMENT NO.: 002, 102, 202, 302, 402	APARTMENT NO.: 003, 103, 203, 303, 403	APARTMENT NO.: 004, 104, 204, 304, 404
2 BHK	2 BHK	2 BHK	2 BHK
SBU Area : 112.00 m ²	SBU Area : 107.50 m ²	SBU Area : 112.00 m ²	SBU Area : 112.00 m ²

TYPICAL
FLOOR PLAN
BLOCK D1

GREENERY SIDE



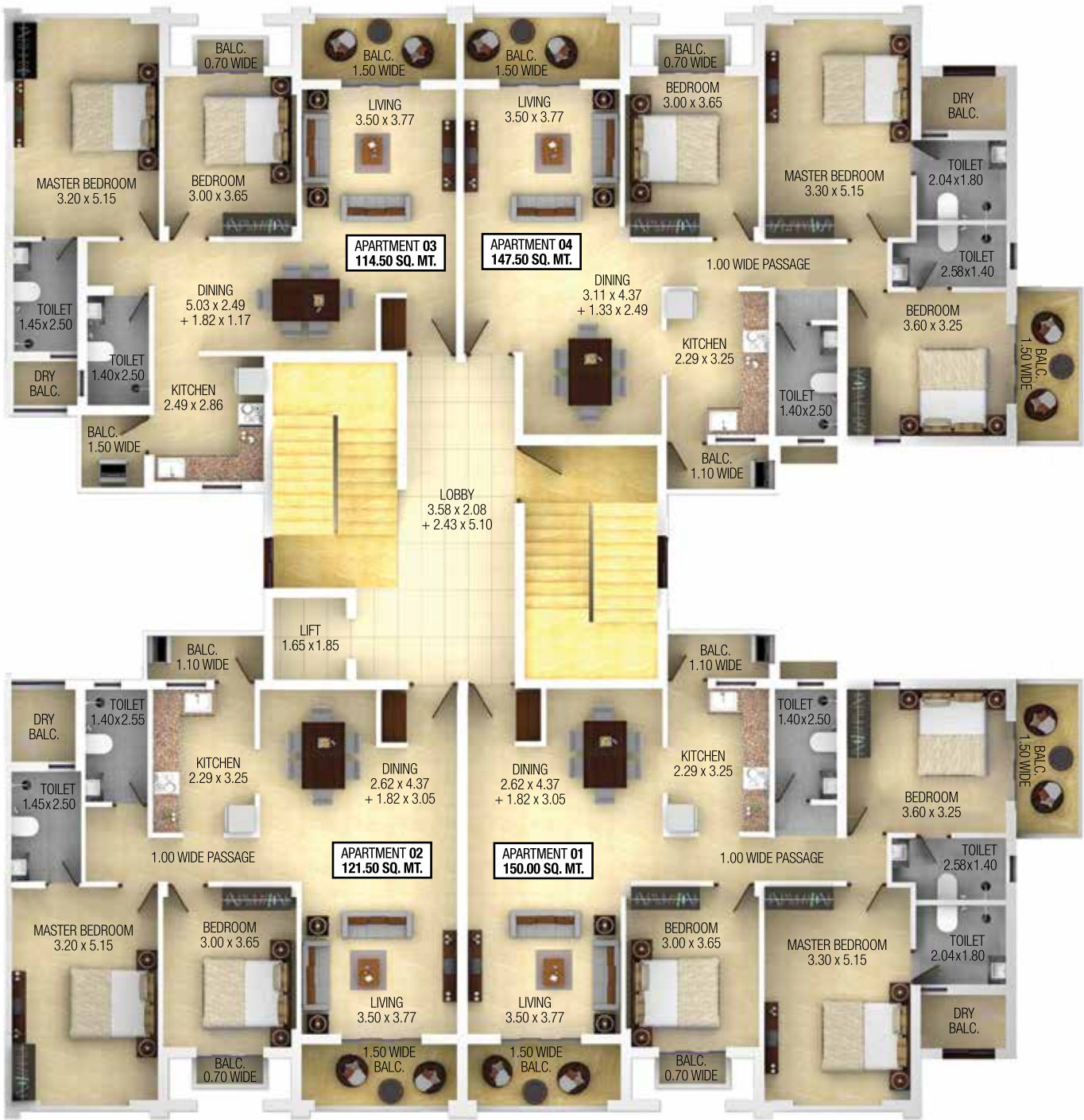
POOL SIDE



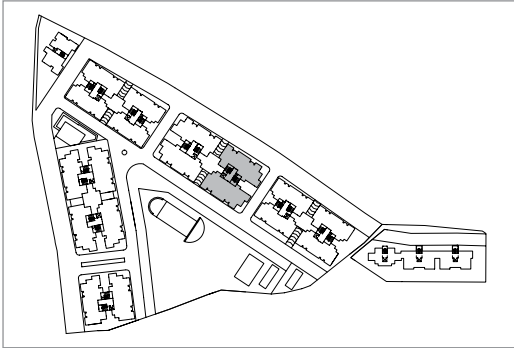
APARTMENT NO.: 001, 101, 201, 301, 401	APARTMENT NO.: 002, 102, 202, 302, 402	APARTMENT NO.: 003, 103, 203, 303, 403	APARTMENT NO.: 004, 104, 204, 304, 404
2 BHK	3 BHK	3 BHK	2 BHK
SBU Area : 121.50 m ²	SBU Area : 150.00 m ²	SBU Area : 147.50 m ²	SBU Area : 114.50 m ²

APARTMENT NO. : 001, 201, 401, 004, 204 & 404 - Terrace: 24.50 m²

GREENERY SIDE



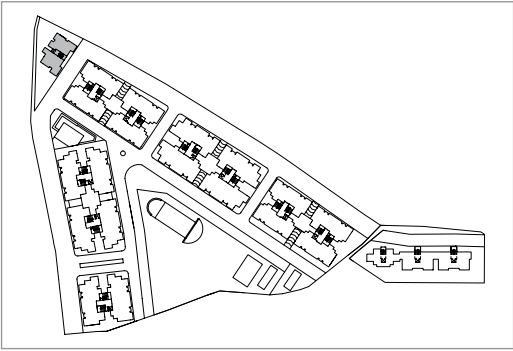
POOL SIDE



APARTMENT NO.: 001, 101, 201, 301, 401	APARTMENT NO.: 002, 102, 202, 302, 402	APARTMENT NO.: 003, 103, 203, 303, 403	APARTMENT NO.: 004, 104, 204, 304, 404
3 BHK	2 BHK	2 BHK	3 BHK
SBU Area : 150.00 m ²	SBU Area : 121.50 m ²	SBU Area : 114.50 m ²	SBU Area : 147.50 m ²

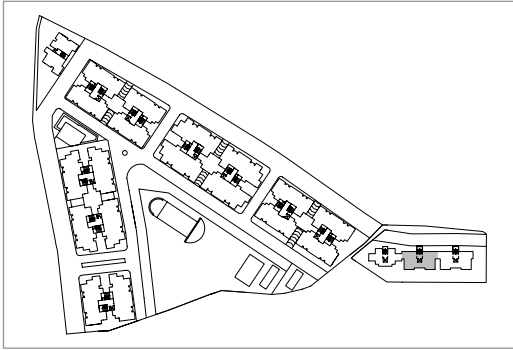
TYPICAL
FLOOR PLAN
BLOCK D2

TYPICAL
FLOOR PLAN
BLOCK F



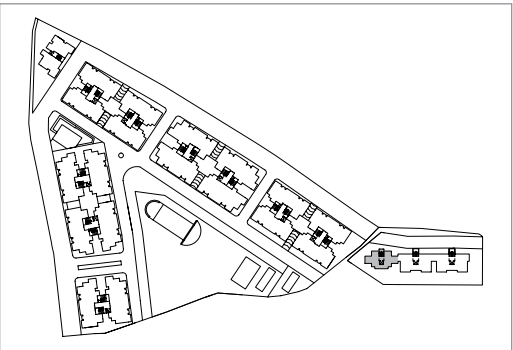
APARTMENT NO.: 001, 101, 201, 301	APARTMENT NO.: 002, 102, 202, 302
2 BHK	2 BHK
SBU Area : 97.00 m ²	SBU Area : 93.50 m ²

TYPICAL
FLOOR PLAN
BLOCK G2

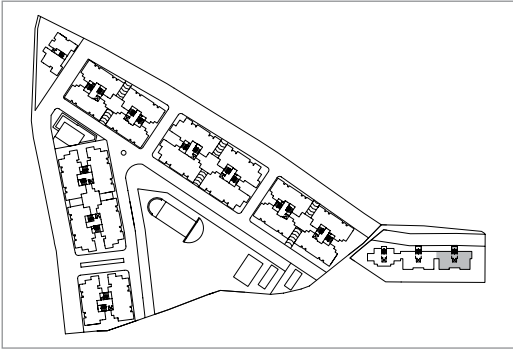


APARTMENT NO.: 001, 101, 201, 301	APARTMENT NO.: 002, 102, 202, 302
2 BHK	2 BHK
SBU Area : 97.00 m ²	SBU Area : 97.00 m ²

TYPICAL
FLOOR PLAN
BLOCK G1

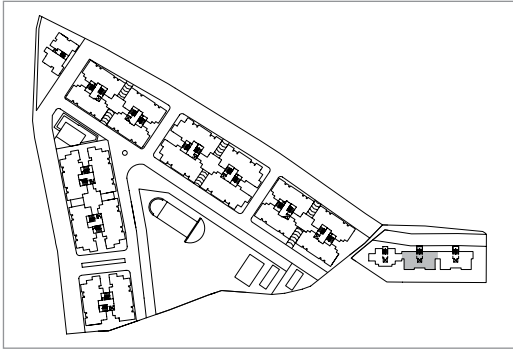
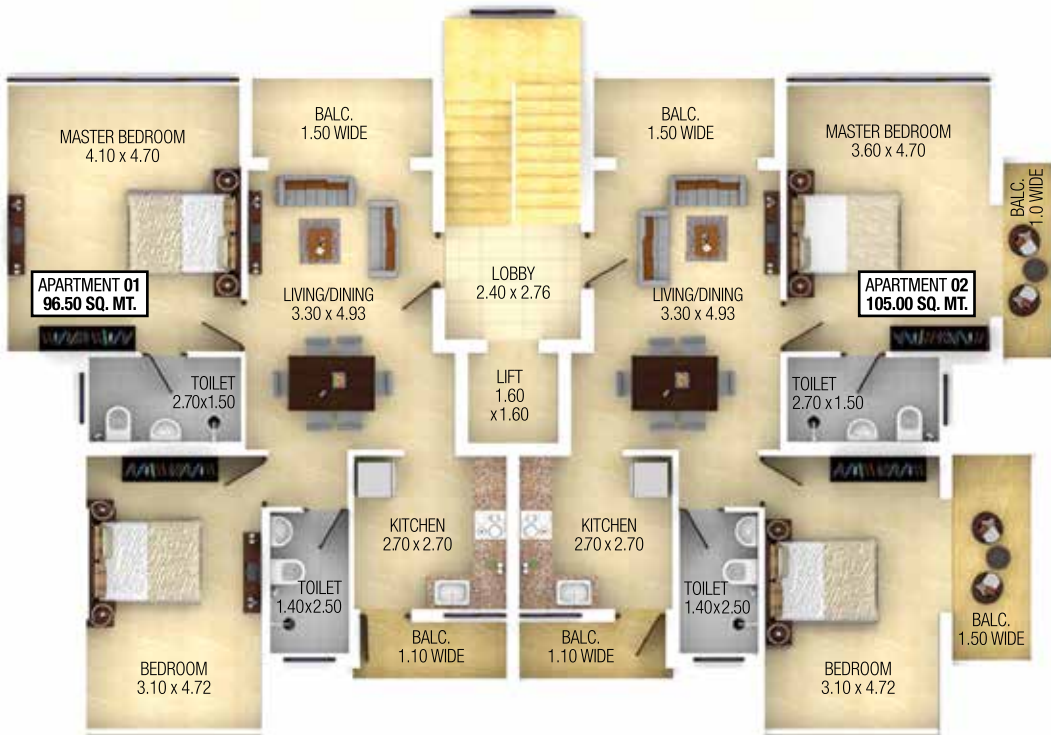


APARTMENT NO.: 001, 101, 201, 301	APARTMENT NO.: 002, 102, 202, 302
1 BHK	1 BHK
SBU Area : 71.50 m ²	SBU Area : 71.00 m ²



APARTMENT NO.: 001, 101, 201, 301	APARTMENT NO.: 002, 102, 202, 302
2 BHK	2 BHK
SBU Area : 96.50 m ²	SBU Area : 105.00 m ²

TYPICAL
FLOOR PLAN
BLOCK G3



APARTMENT NO.: 001, 101, 201, 301	APARTMENT NO.: 002, 102, 202, 302
2 BHK	2 BHK
SBU Area : 97.00 m ²	SBU Area : 97.00 m ²

FEATURES AND AMENITIES



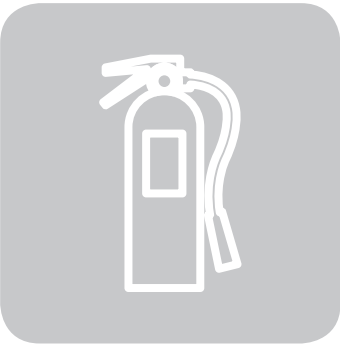
GATED COMPLEX WITH 24 HOUR SECURITY



24 x 7 CCTV IN COMMON AREAS



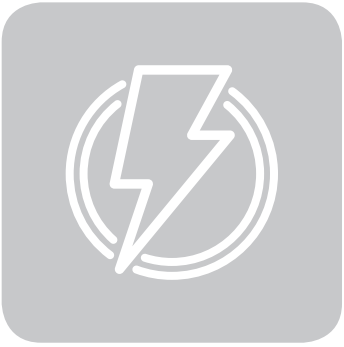
VIDEO PHONES IN APARTMENTS



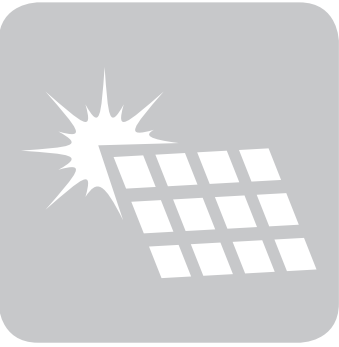
FIRE FIGHTING PROVISIONS



EARTHQUAKE RESISTANT PROJECT



BACK UP GENERATORS IN COMMON AREAS



SOLAR HOT WATER FOR BATHROOMS



SOLID WASTE MANAGEMENT



FULLY EQUIPPED GYMNASIUM



BADMINTON/VOLLEY BALL COURT



HALF BASKET BALL COURT



CHILDRENS PLAY AREA



PARTY HALL



SWIMMING POOL



SITTING AREA FOR SENIOR CITIZENS



LANDSCAPED GARDENS



LOCATION

Strategically located on the main Mapusa-Siolim road, **ZION SQUARE 2** is a short drive from Goa’s famous northern beach belt with its vibrant night life, restaurants and shopping. A few minutes away from **ZION SQUARE 2** are major utilities including schools, colleges, malls, multiplexes, healthcare facilities and much more. With unmatched connectivity and accessibility, **ZION SQUARE 2** offers one of the most preferred residential locations in the state.

PROXIMITY

Hospital / Petrol Pump : 1 km
Church / Temple : 1 km
Schools / Colleges : 1-2 kms
Market : 1-2 kms
Restaurant/Banks : 1-2 kms
Beach : 8 km

A FEW OF OUR DEVELOPMENTS



PINTO ROSARIO SQUARE : SOCORRO - GOA



ZION SQUARE : DULER, MAPUSA - GOA



WHITE SQUARE NIRVANA : GUIRIM - GOA

Profile : Classic Squares Realty Pvt. Ltd.

DIRECTORS : Eng. Oswald de Melo and Eng. Atmaram Fulari

“Classic Squares Realty Pvt. Ltd.” is a property development and construction company in Goa that was established in the year 2005. Almost a decade later, in Goa we have earned the reputation for quality construction, superior specifications and punctual delivery in all of our Villas and Apartment Projects. We are especially recognized for an excellent post possession services we offer to our satisfied home owners.

Every Classic Squares project is personally inspected by its directors on a daily basis. The strong commitment strictly adhered to by its directors and qualified site engineers results in an excellent finished product in terms of quality, specification and asset appreciation.

BENTO MIGUEL SQUARE
CARANZALEM - GOA





CLASSIC SQUARES REALTY PVT. LTD.

501, 5th Floor, Fortune Square Building,
Morod, Mapusa, Bardez, Goa 403 507 INDIA.

Tel.: +91-8381080007 / +91-8888060007

Email: sales@classicsquares.in

www.classicsquares.in